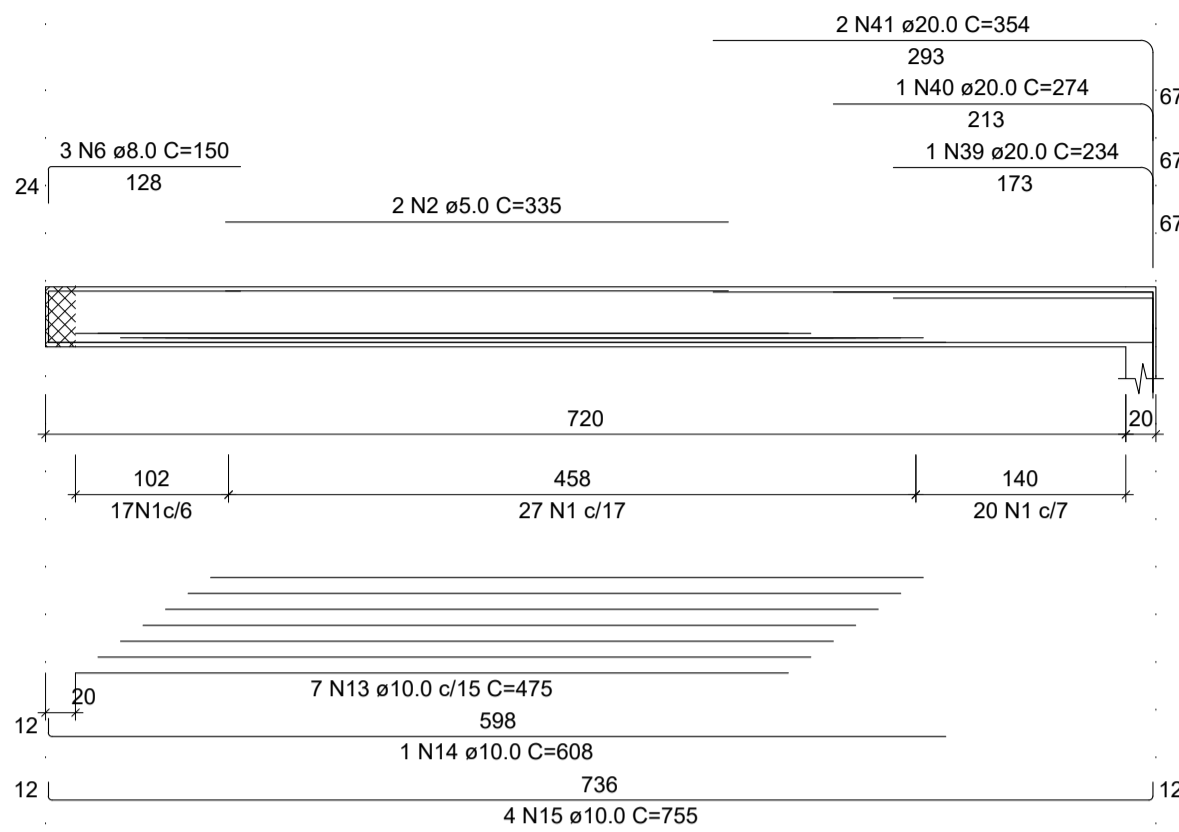
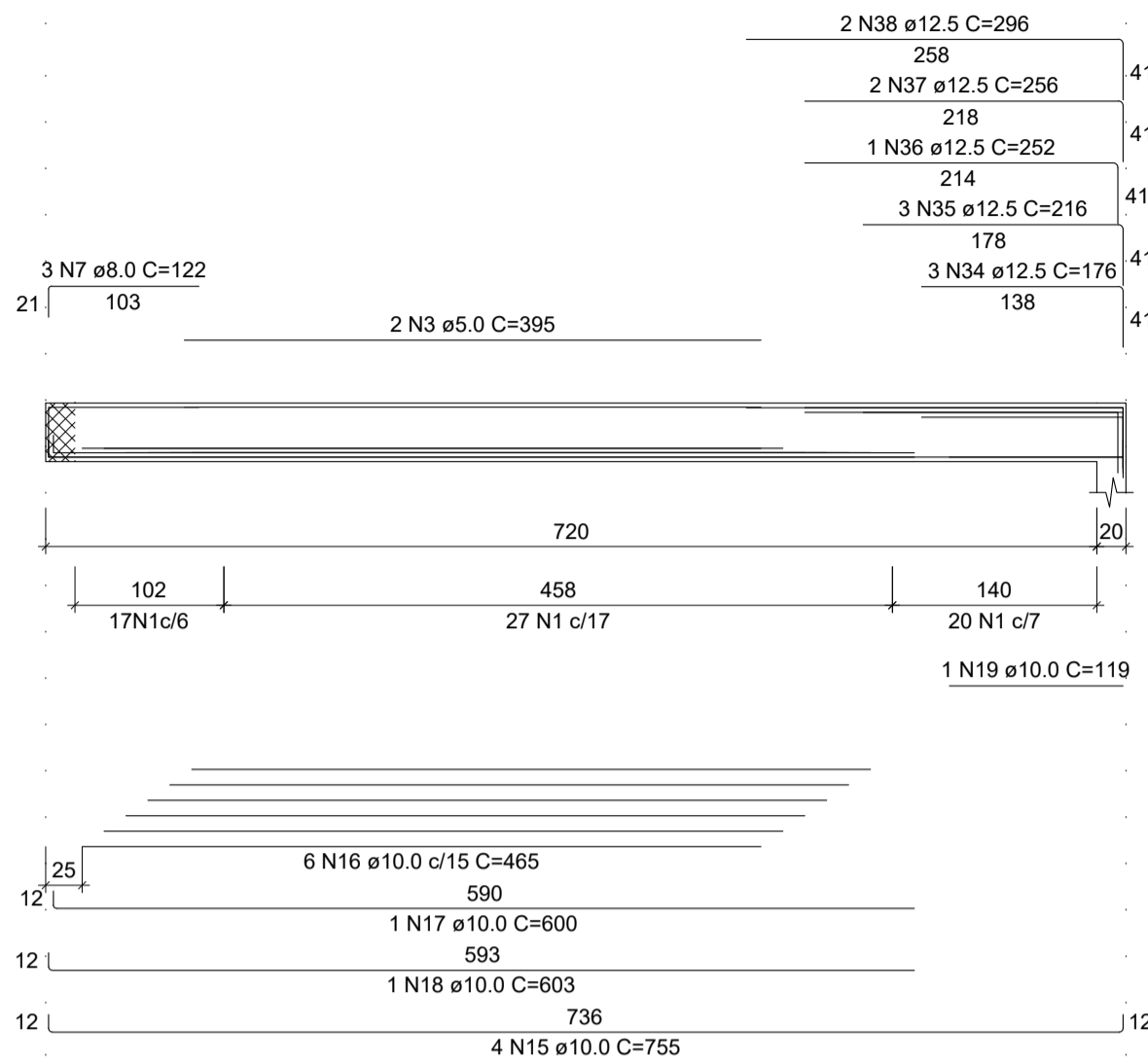


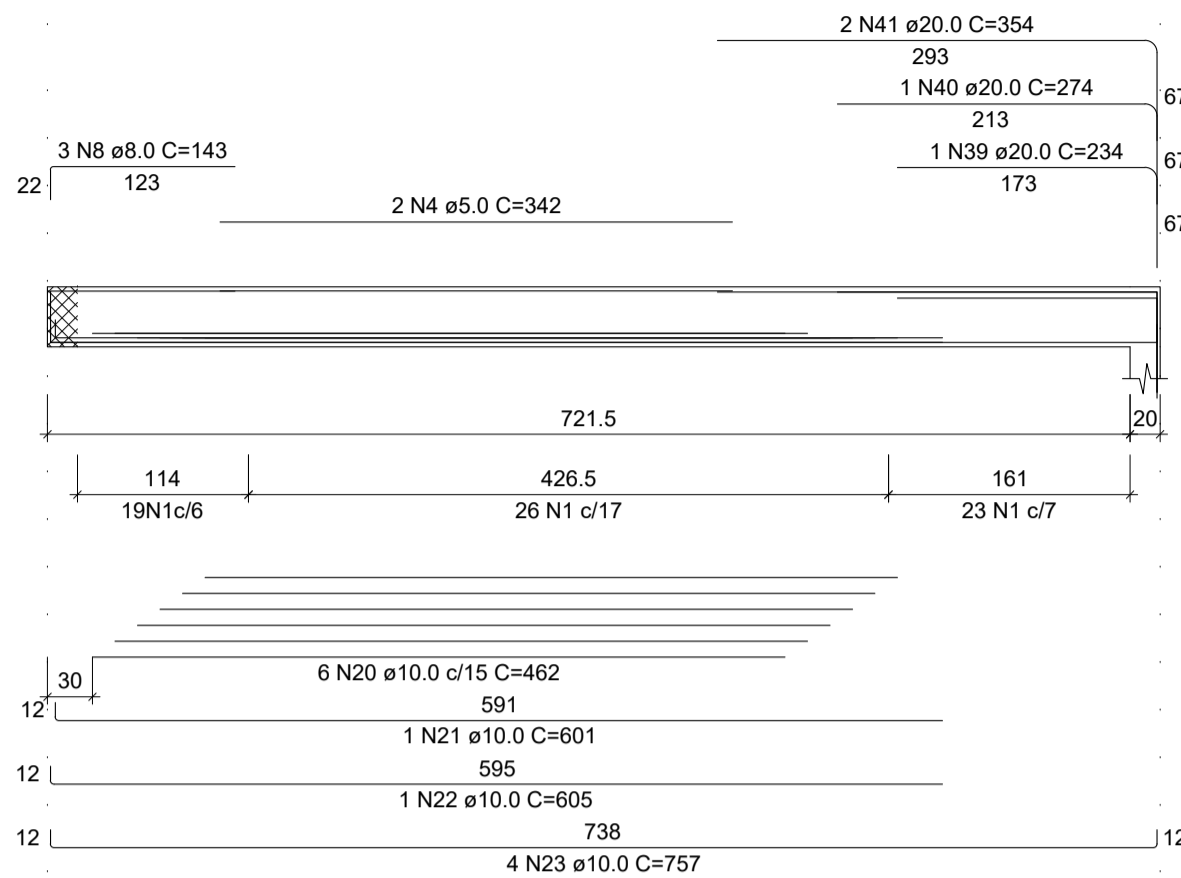
V25



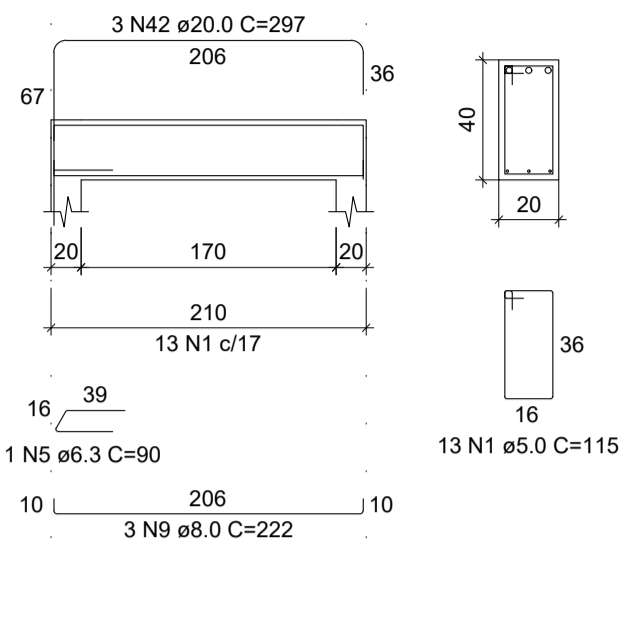
V26



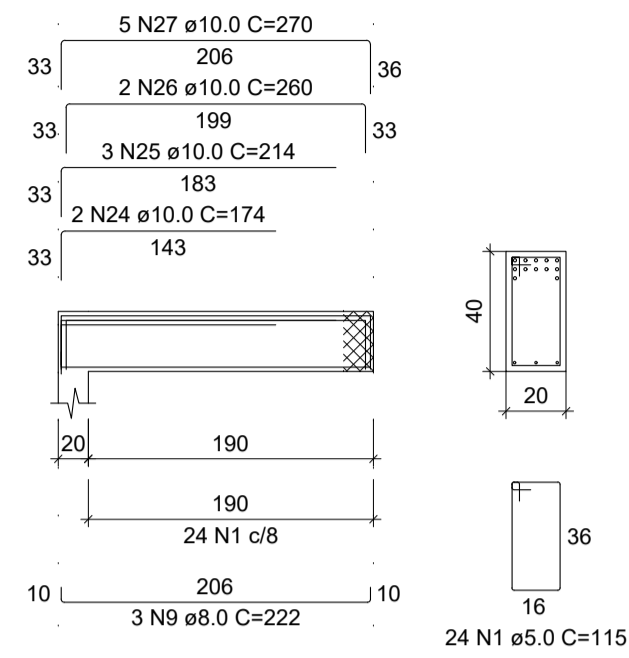
V27



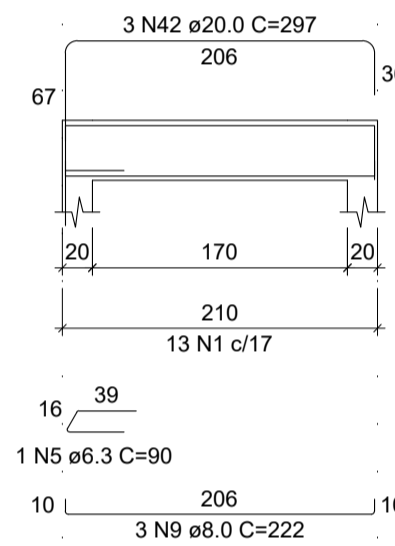
V30



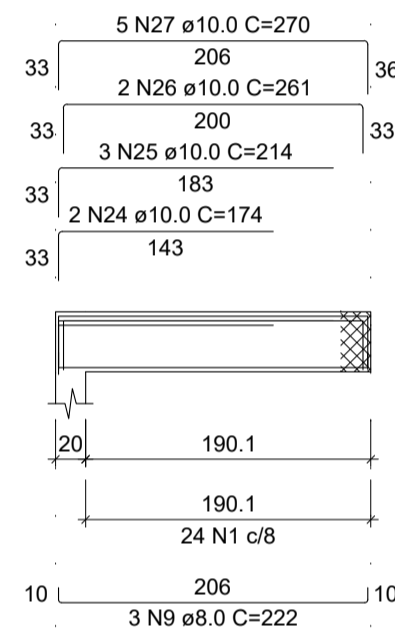
V31



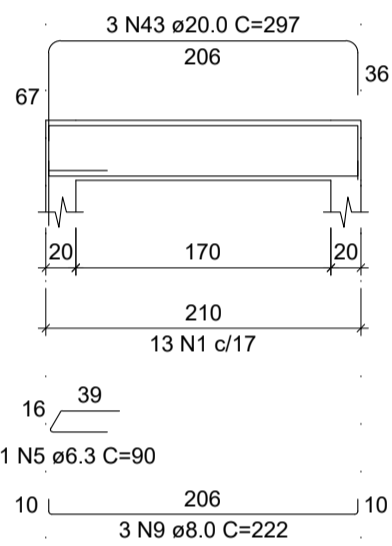
V32



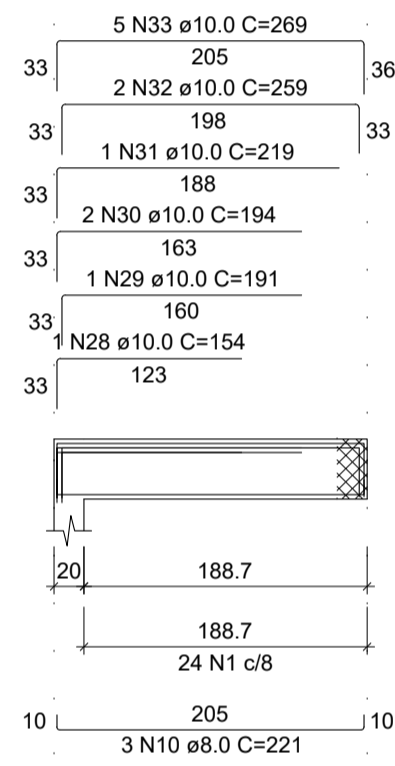
V33



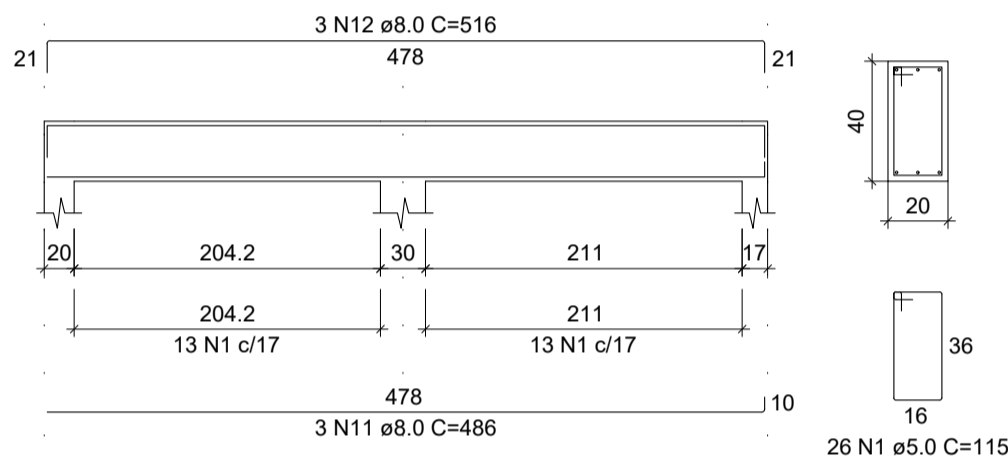
V34



V35



V36



RELAÇÃO DO AÇO

AÇO	N	DIAM (mm)	QUANT	C.UNIT (cm)	C.TOTAL (cm)
V25	1	5.0	333	115	38295
V30	2	5.0	2	335	670
V33	3	5.0	2	395	790
V36	4	5.0	2	342	684
	5	6.3	3	90	270
	6	8.0	3	150	450
	7	8.0	3	122	366
	8	8.0	3	143	429
	9	8.0	15	222	3330
	10	8.0	3	221	663
	11	8.0	3	486	1458
	12	8.0	3	516	1548
	13	10.0	7	475	3325
	14	10.0	1	608	608
	15	10.0	8	755	6040
	16	10.0	6	465	2790
	17	10.0	1	600	600
	18	10.0	1	603	603
	19	10.0	1	119	119
	20	10.0	6	462	2772
	21	10.0	1	601	601
	22	10.0	1	605	605
	23	10.0	4	757	3028
	24	10.0	4	174	696
	25	10.0	6	214	1284
	26	10.0	4	260	1040
	27	10.0	10	270	2700
	28	10.0	1	154	154
	29	10.0	1	191	191
	30	10.0	2	194	388
	31	10.0	1	219	219
	32	10.0	2	259	518
	33	10.0	5	269	1345
	34	12.5	3	176	528
	35	12.5	3	216	648
	36	12.5	1	252	252
	37	12.5	2	256	512
	38	12.5	2	296	592
	39	20.0	2	234	468
	40	20.0	2	274	548
	41	20.0	4	354	1416
	42	20.0	6	297	1782
	43	20.0	3	297	891

RESUMO DO AÇO

AÇO	DIAM (mm)	C.TOTAL (m)	PESO + 10% (kg)
CA50	6.3	2.7	0.7
	8.0	82.4	35.8
	10.0	296.3	200.9
	12.5	25.3	26.8
	20.0	51.1	138.5
CA60	5.0	404.4	68.6

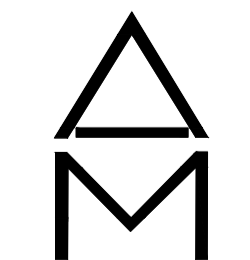
PESO TOTAL (kg)

CA50 402.8

CA60 68.6

Volume de concreto (C-30) = 2.87 m³
Área de forma = 39.62 m²

ANDRÉ MADEIRA
ENGENHARIA



(51) 98555-4410

CENTRO - GRAVATAI - RS
WWW.ANDREMADEIRA.COM.BR
ANDRELUISMADEIRA@GMAIL.COM

PRANCHA: **E-10**

PROJETO AMPLIAÇÃO EMEF EDMUNDO EST.
RUA TRES COROAS
CAMPO BOM - RS

PROPRIETÁRIO: _____
PREFEITURA DE CAMPO BOM - SEC EDUCAÇÃO

RESPONSÁVEL TÉCNICO: _____
ANDRÉ LUIS MADEIRA - CREA 179363

ESTRUTUTURAL VIGAS COBERTURA 3 DE 3

ÁREA: -m²

DATA: OUT/2021

ESCALA: INDICADA